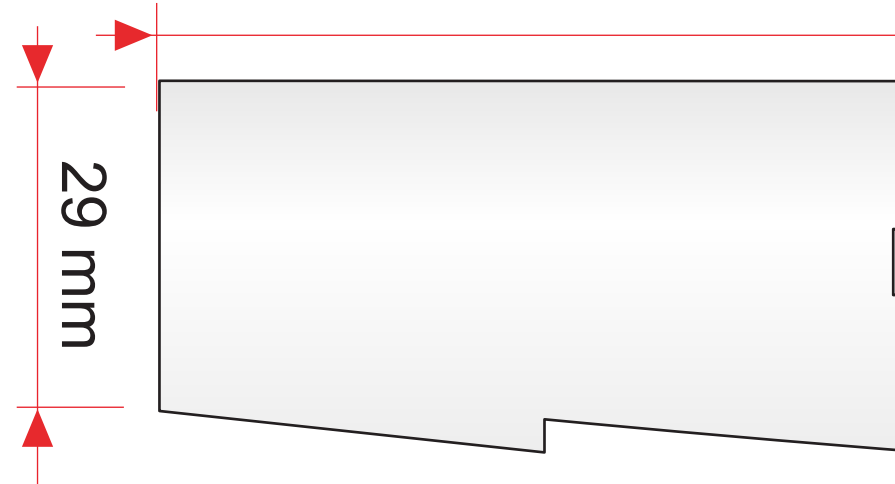


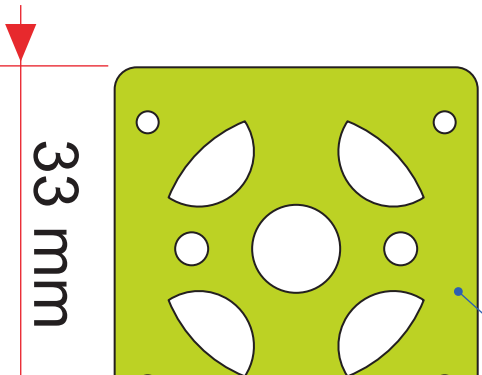
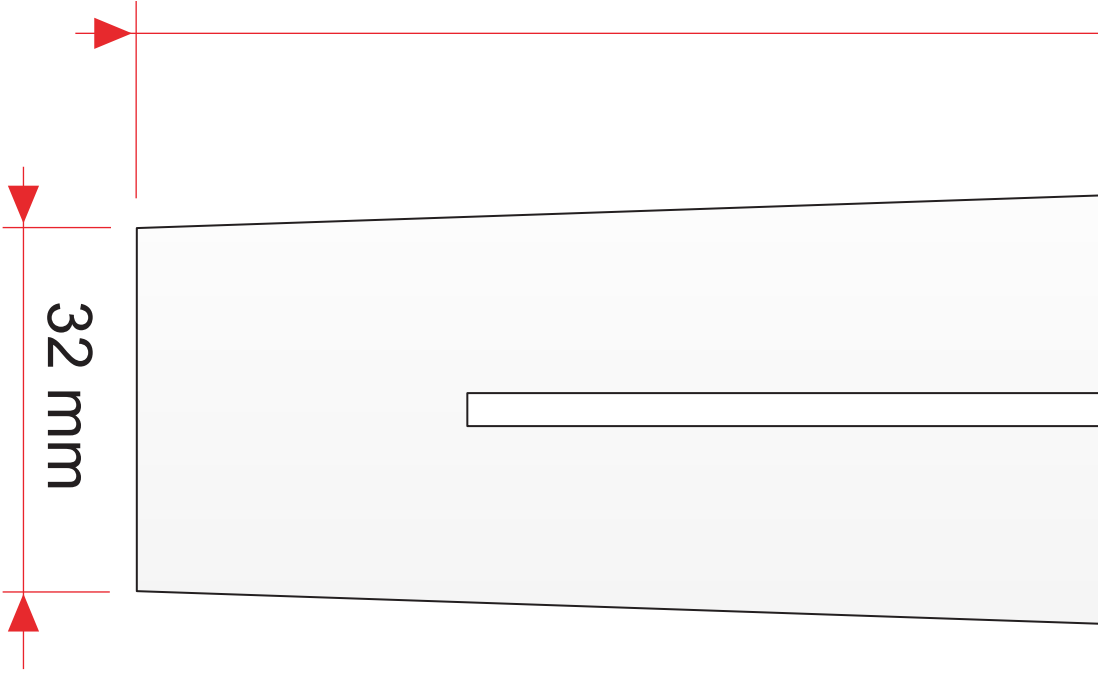
100mm

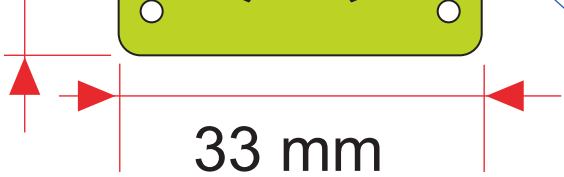


Si la mesure ne donne pas 100mm, par exemple :
la mesure donne 97 mm alors il faut imprimer à
 $1 / 97 \times 10000 = 103,09$
Imprimez à 103 %



Flanc (2 piè



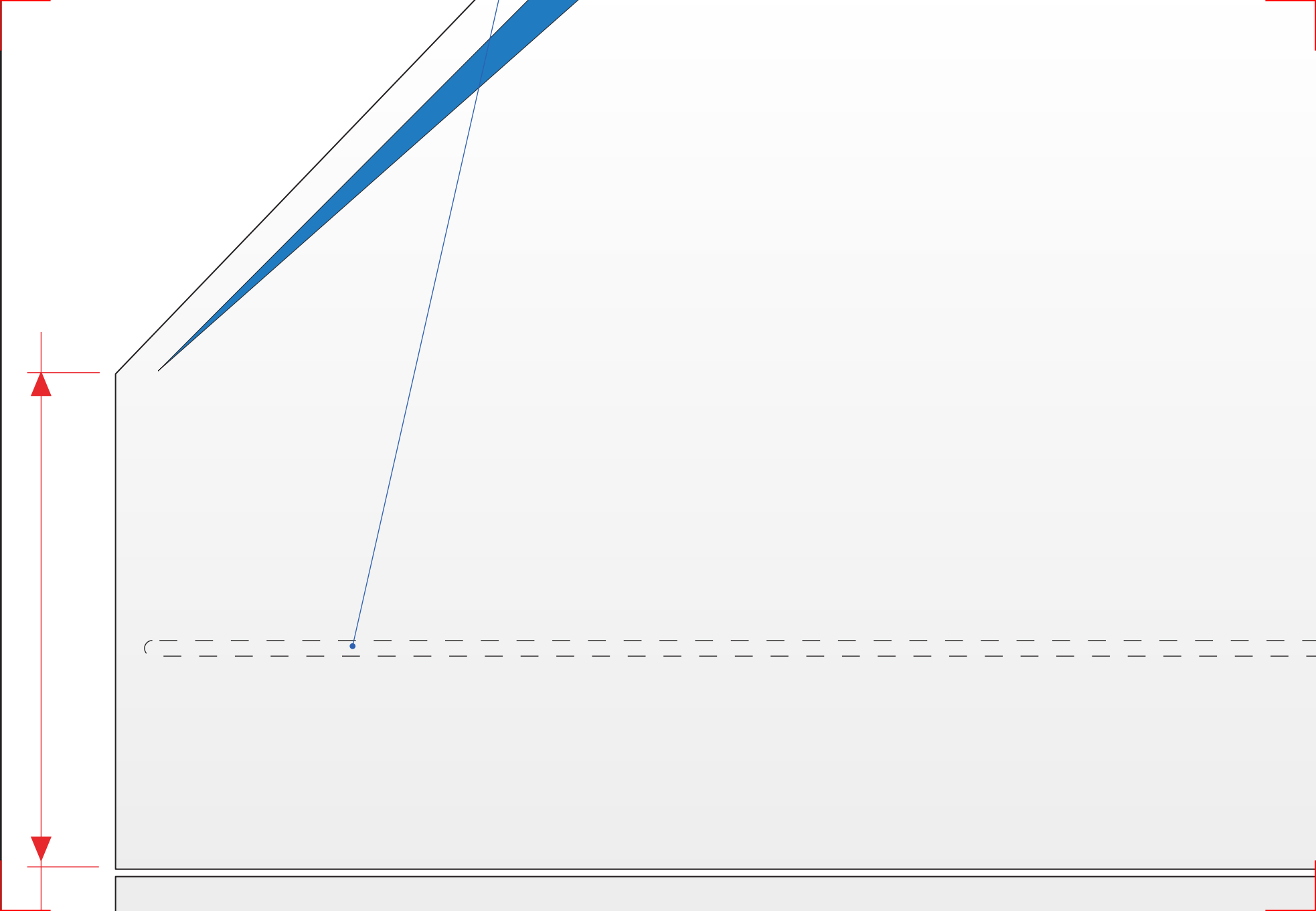


33 mm

Couple moteur époxy 2 mm

Longeron :
jonc carbone 2 mm





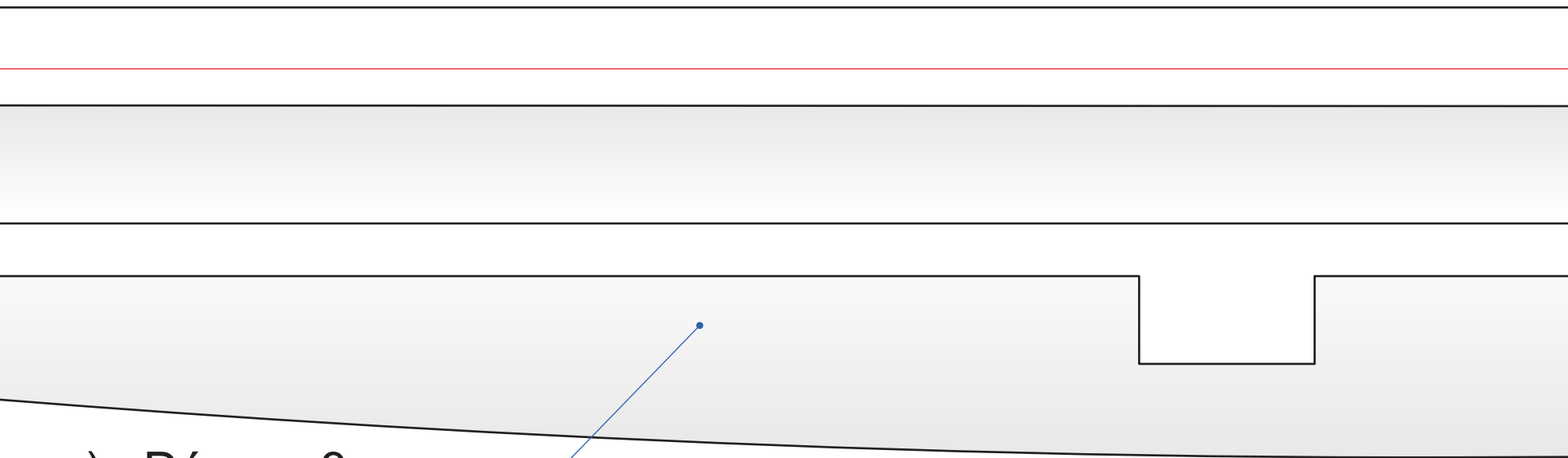


445 mm

The image shows a technical drawing of a tapered shaft. A dimension line with arrows at both ends indicates a length of 445 mm. The shaft is light gray with a darker gray outer shell. A blue triangular section is visible on the right side. A dashed rectangular box on the right side is labeled 'Accu'.

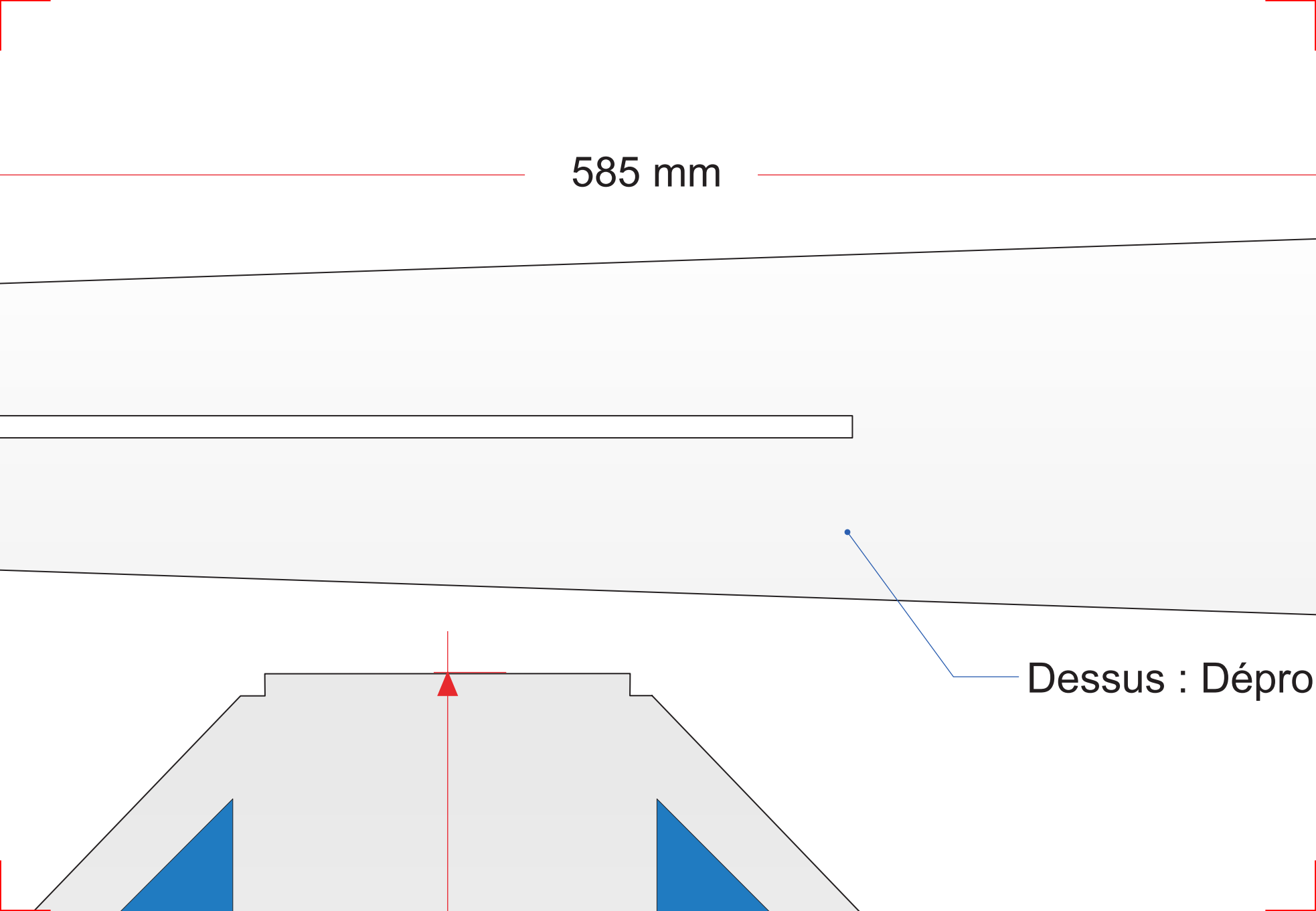
Accu

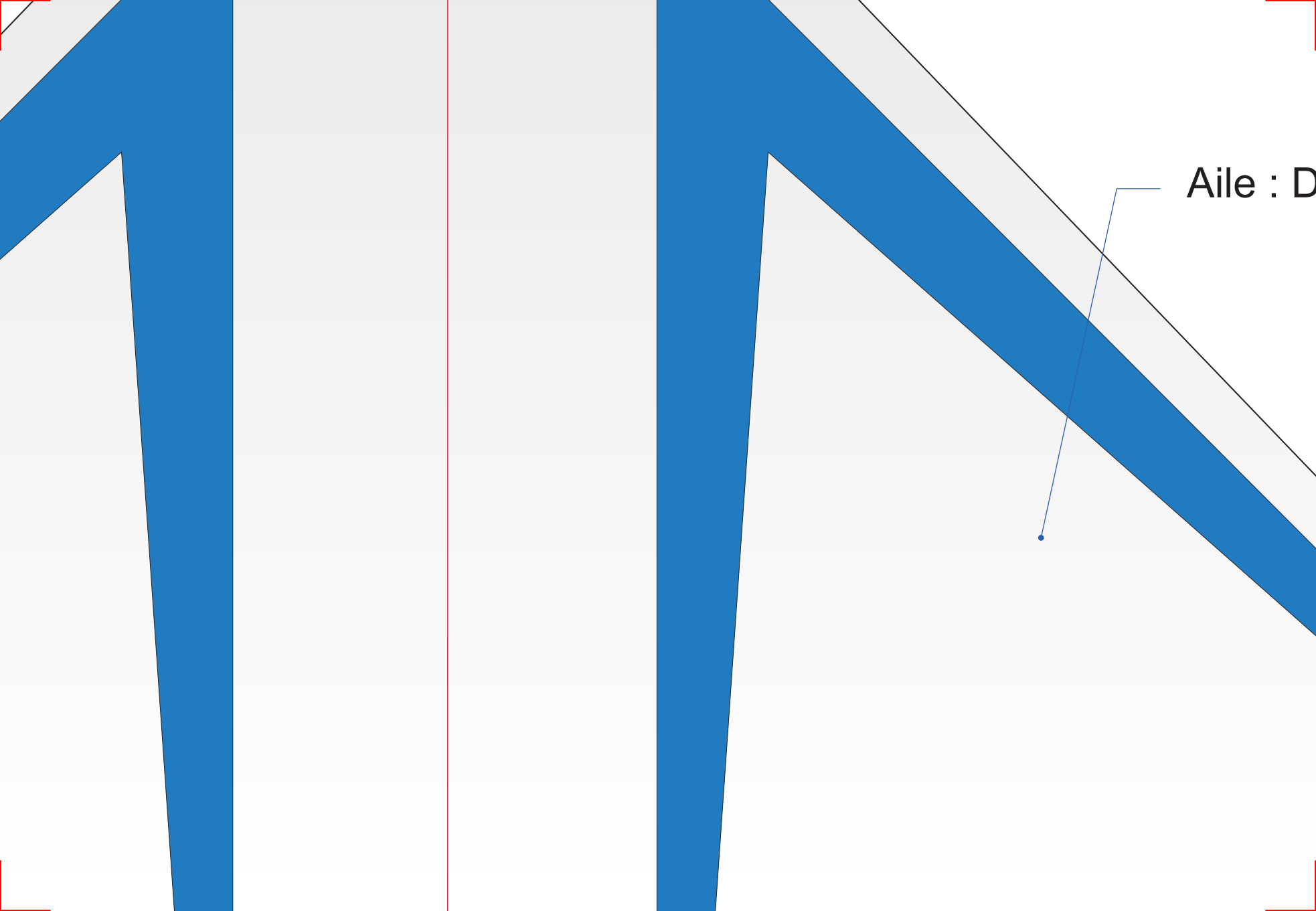
ces) : Dépron 3 mm



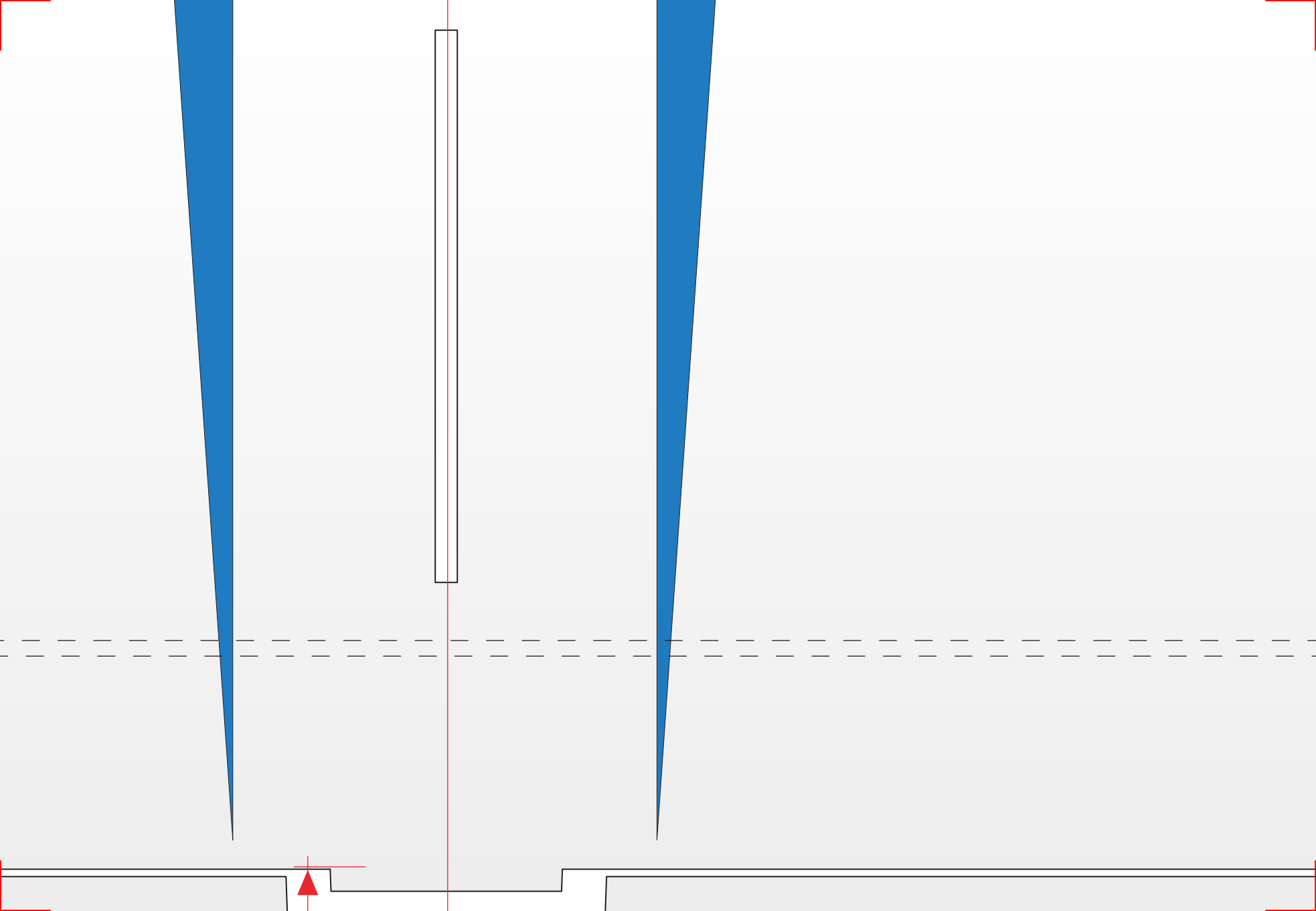
585 mm

Dessus : Dépro





Aile : D

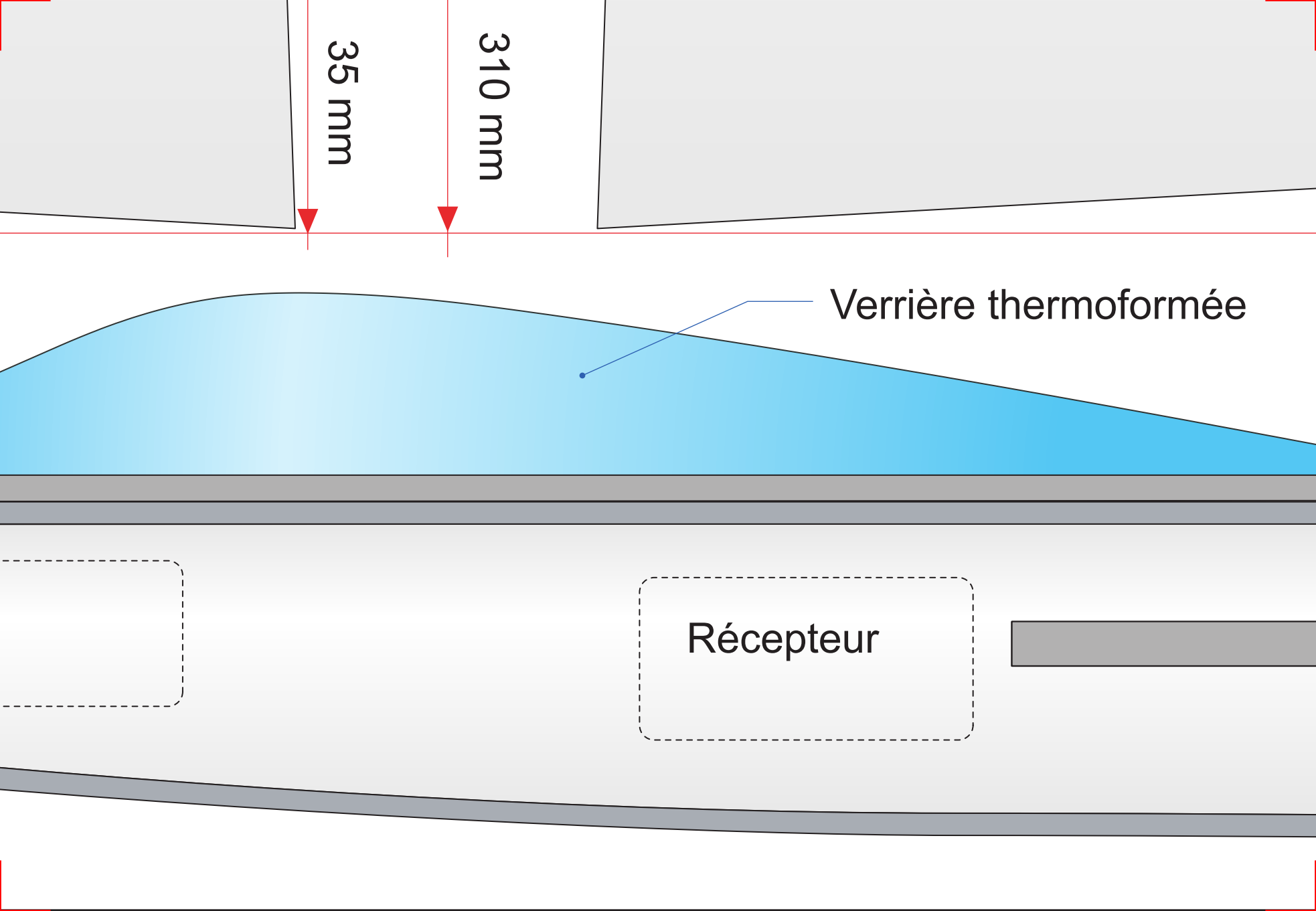


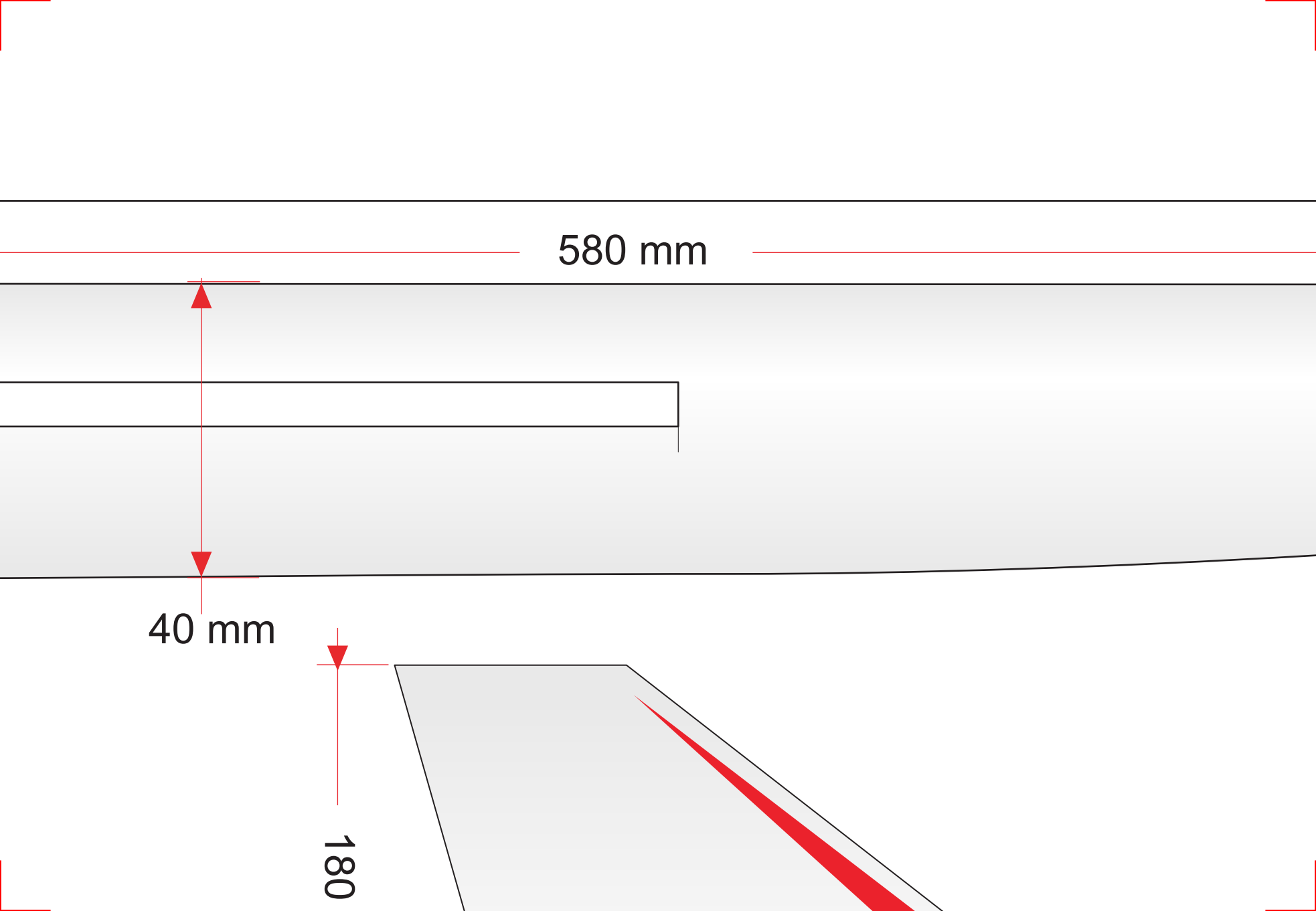
35 mm

310 mm

Verrière thermoformée

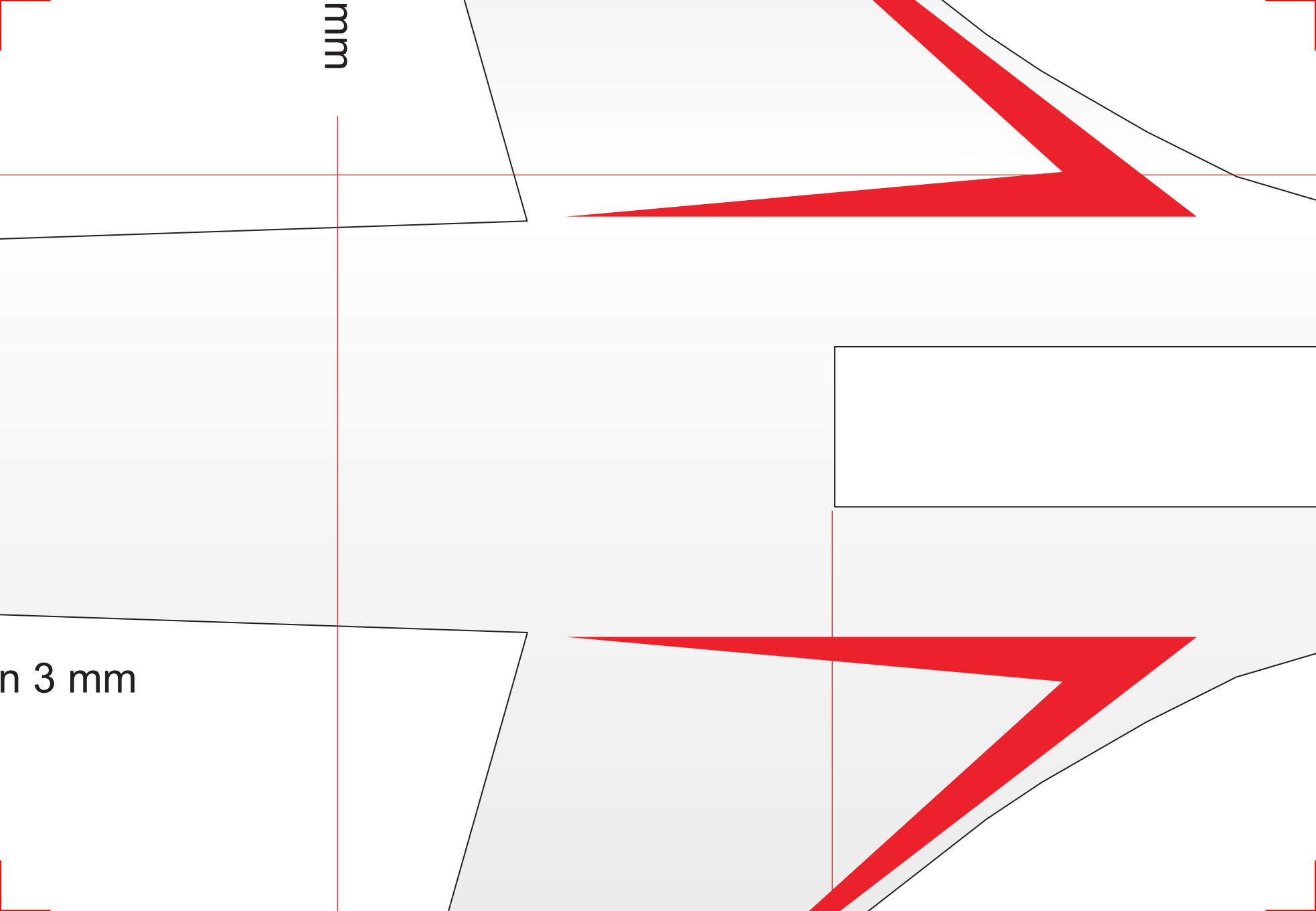
Récepteur



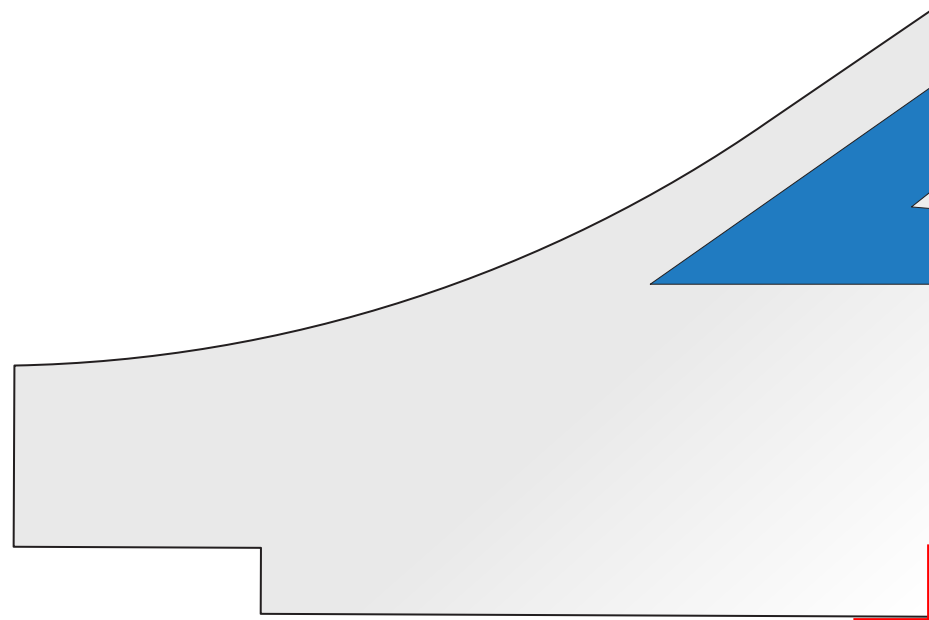
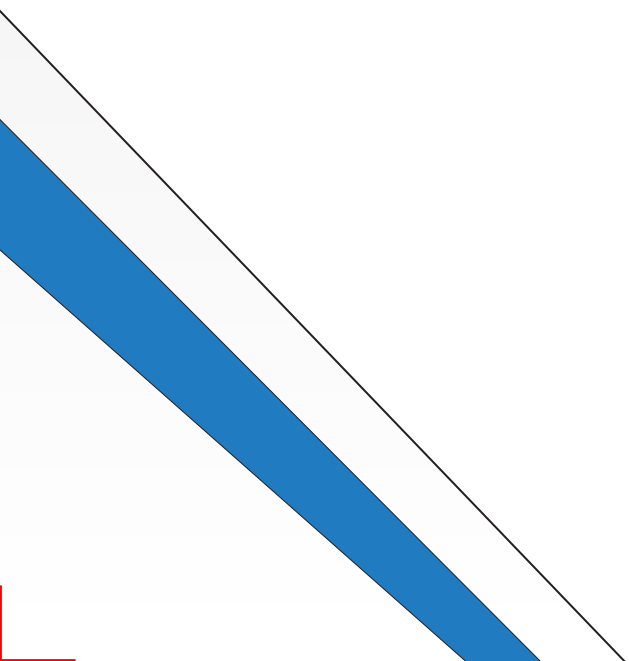


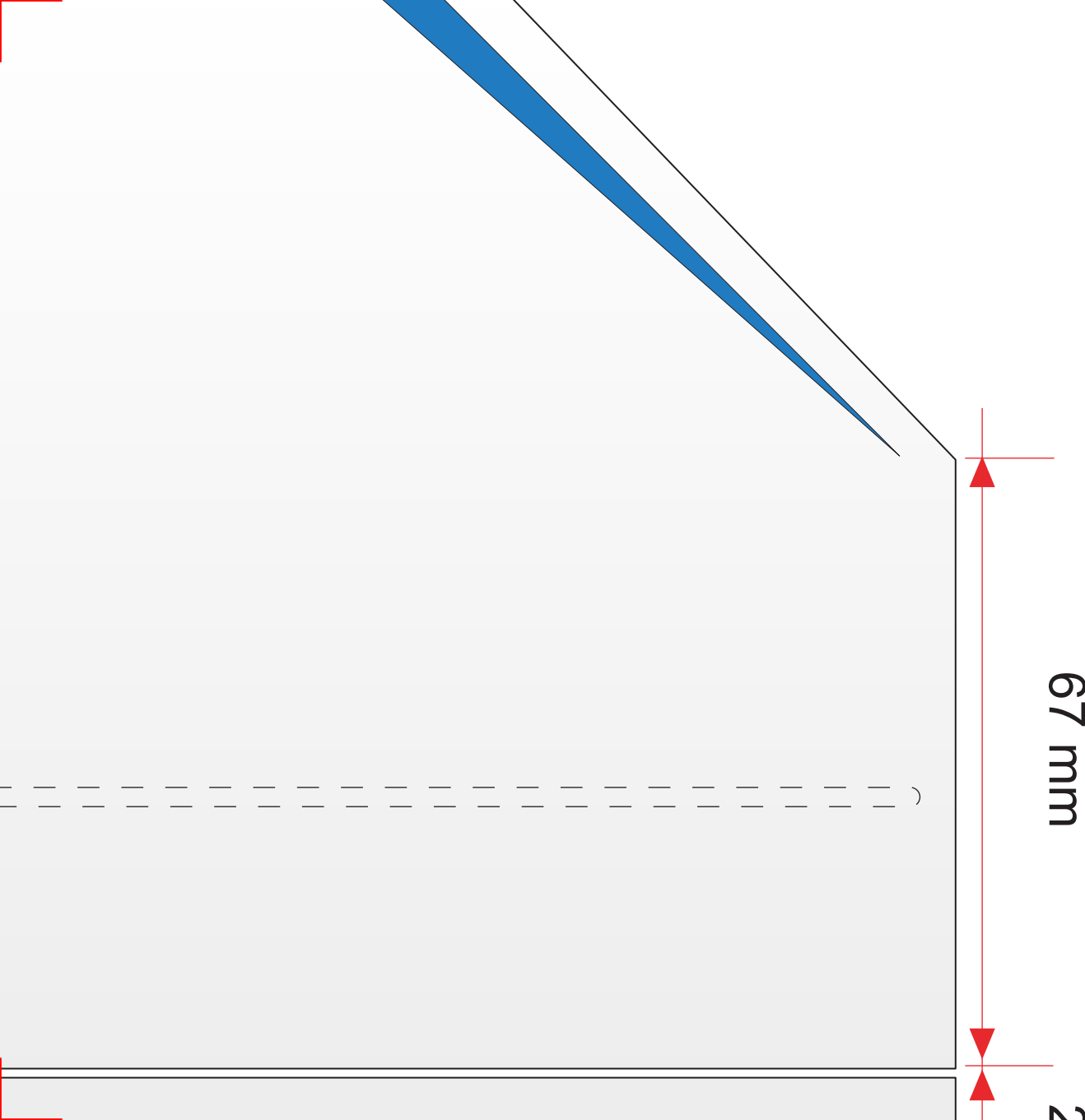
mm

n 3 mm



Dépron 6 mm





Micro

Conception
(retracé p

Enver

Long

Surf

Ma

Charge

Moteur : Type Flyware 2

Batterie : Ko

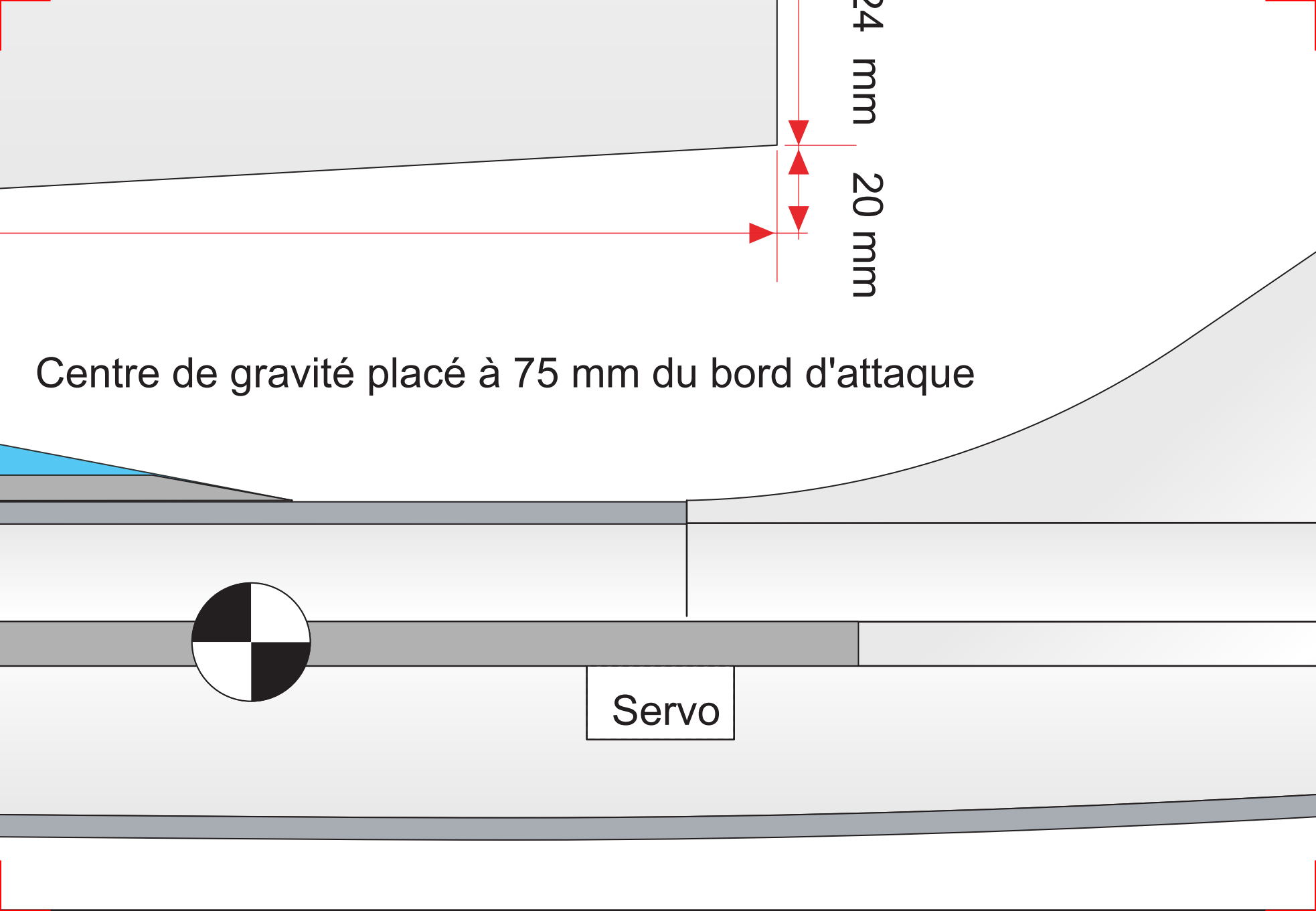
Hélic

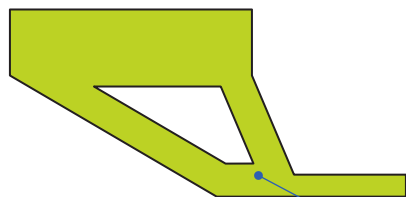
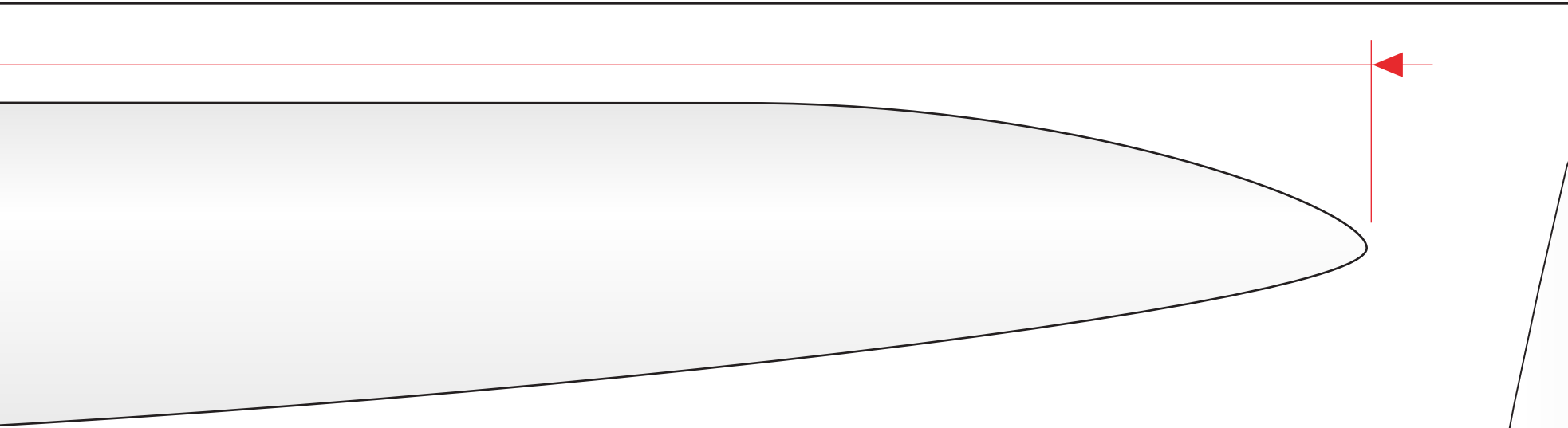
Radio : 3 vo

24 mm
20 mm

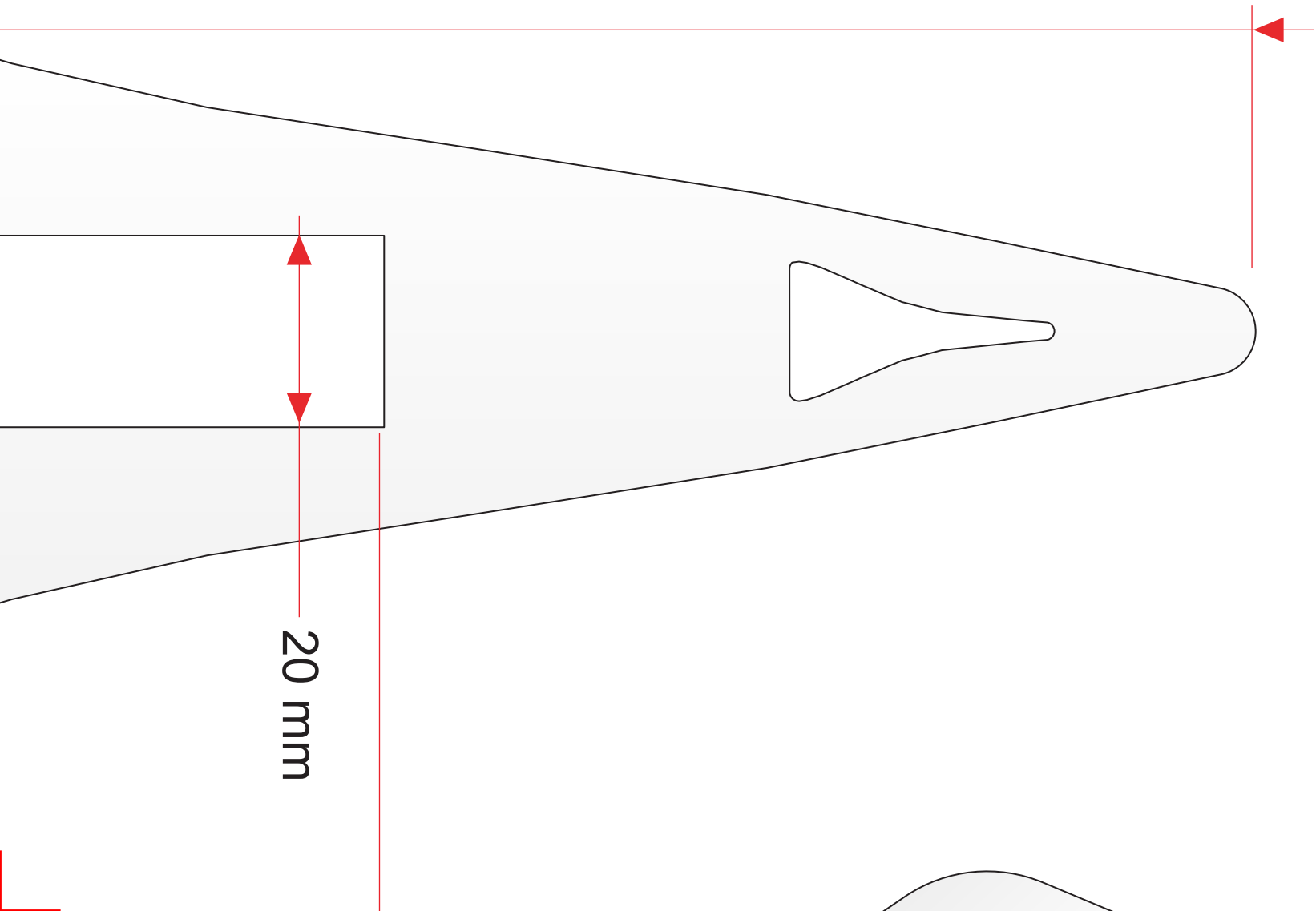
Centre de gravité placé à 75 mm du bord d'attaque

Servo

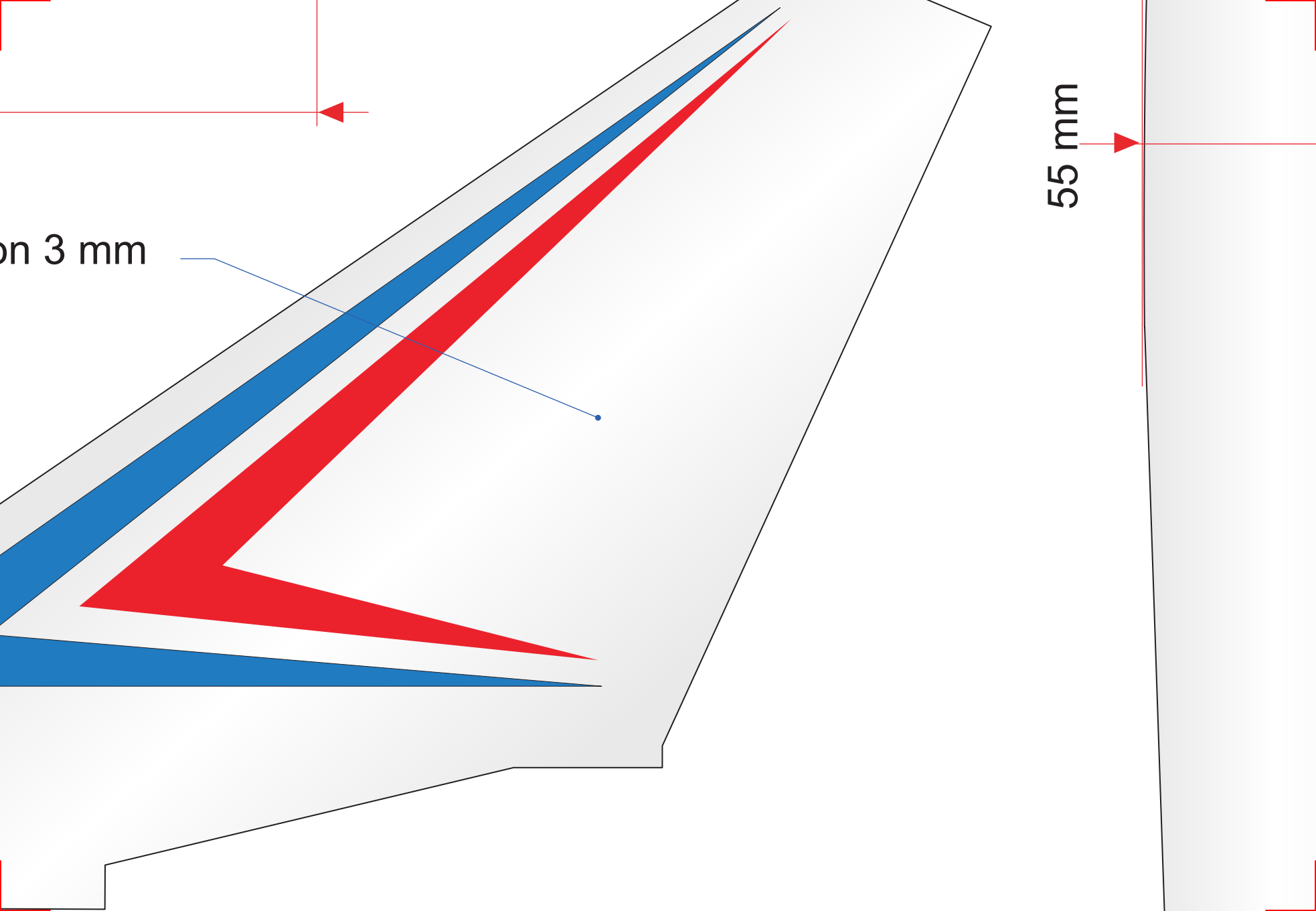




Guignol époxy 2 mm 



20 mm



o Rafale

h : Stéphane Pinson
(par Laurent Berlivet)

rgure : 44,5 cm

gueur : 60 cm

face : 9,6 dm²

asse : 183 g

alaire : 19 g/dm²

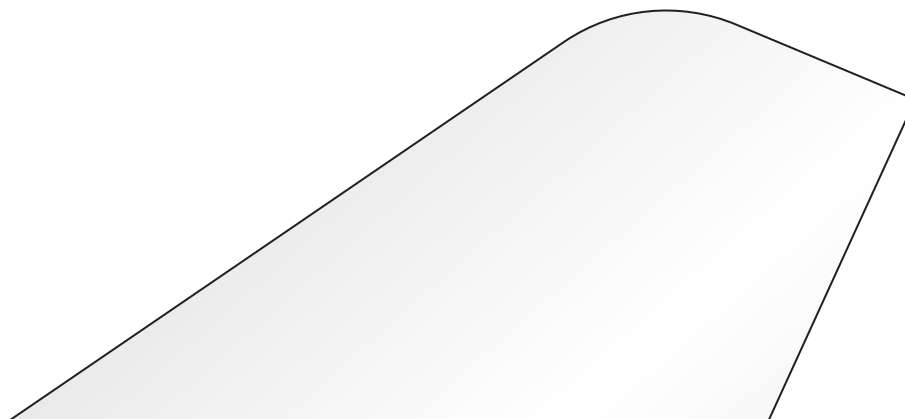
20 avec Kv minimum de 2000 T/V

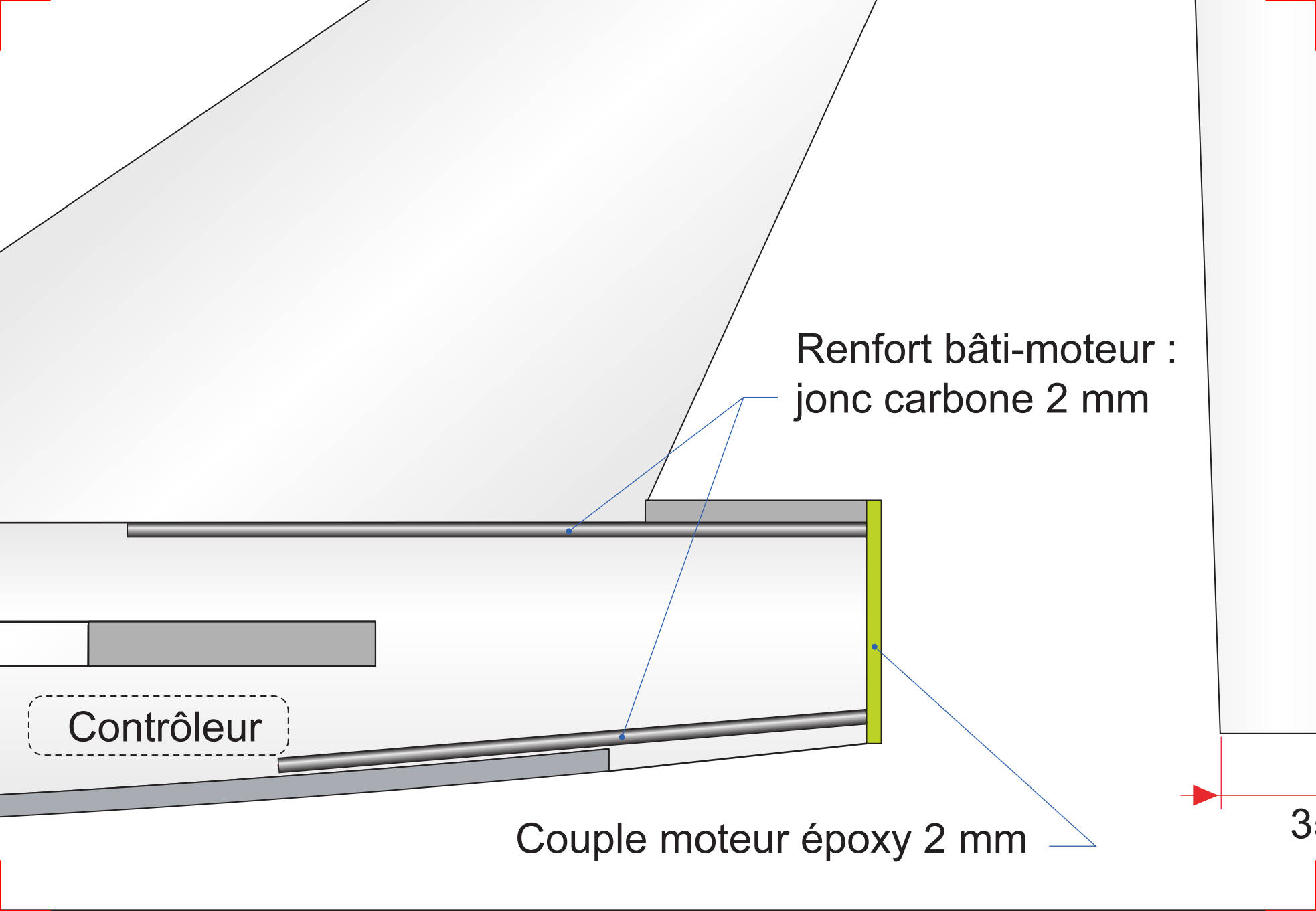
kam 3S 740 mA 20 C

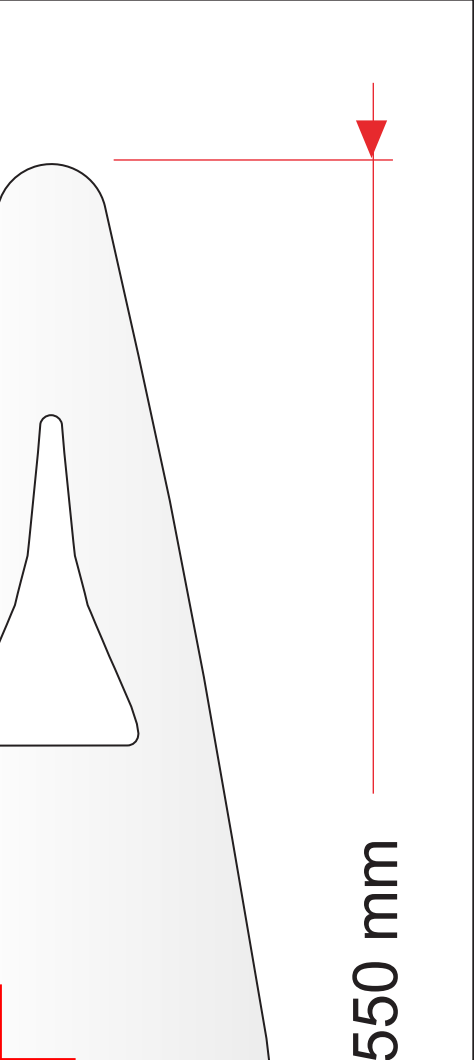
e : GWS 5x"3"

ies, 2 microséros 4 g

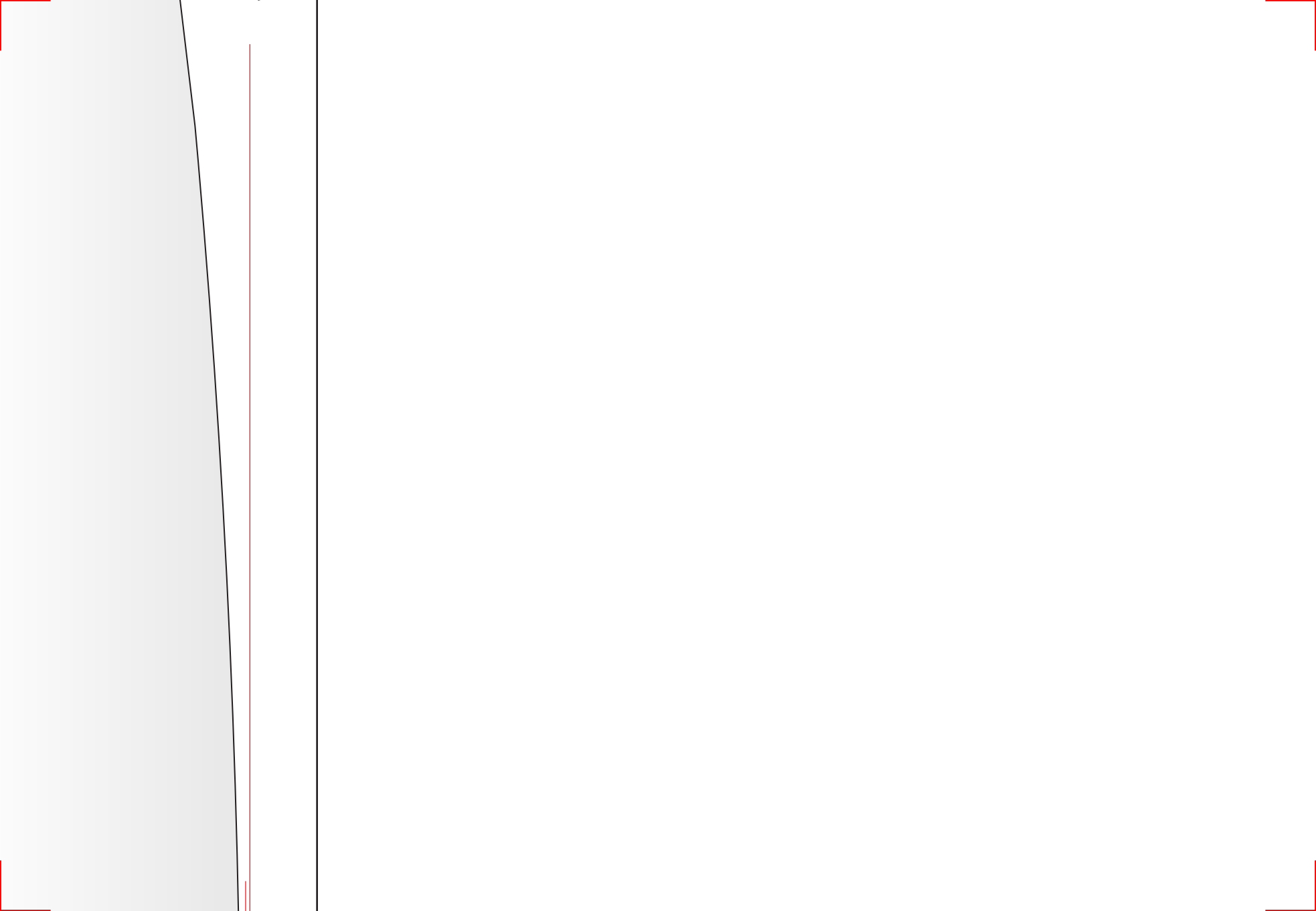
Dessous : Dépron 3 mm

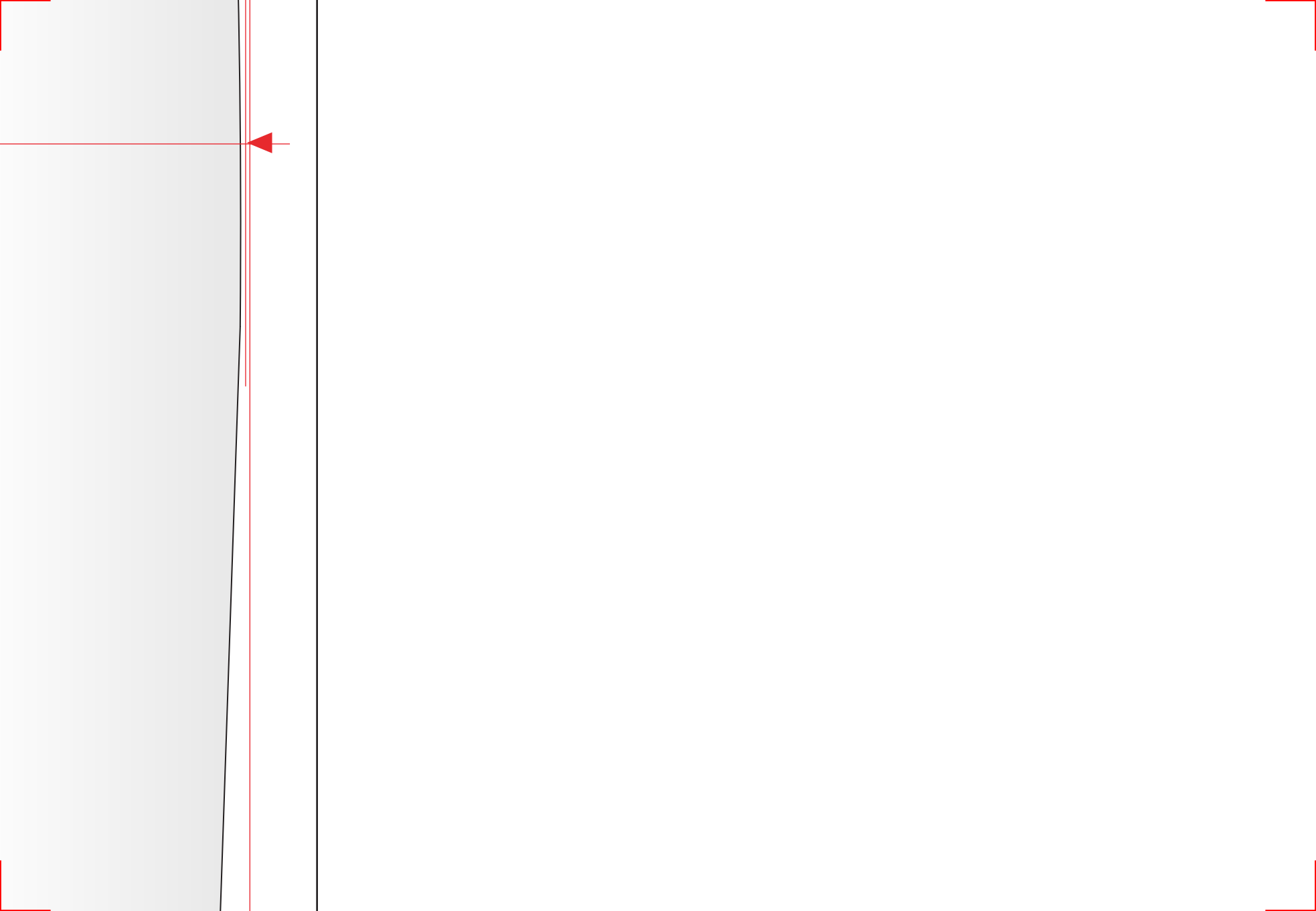


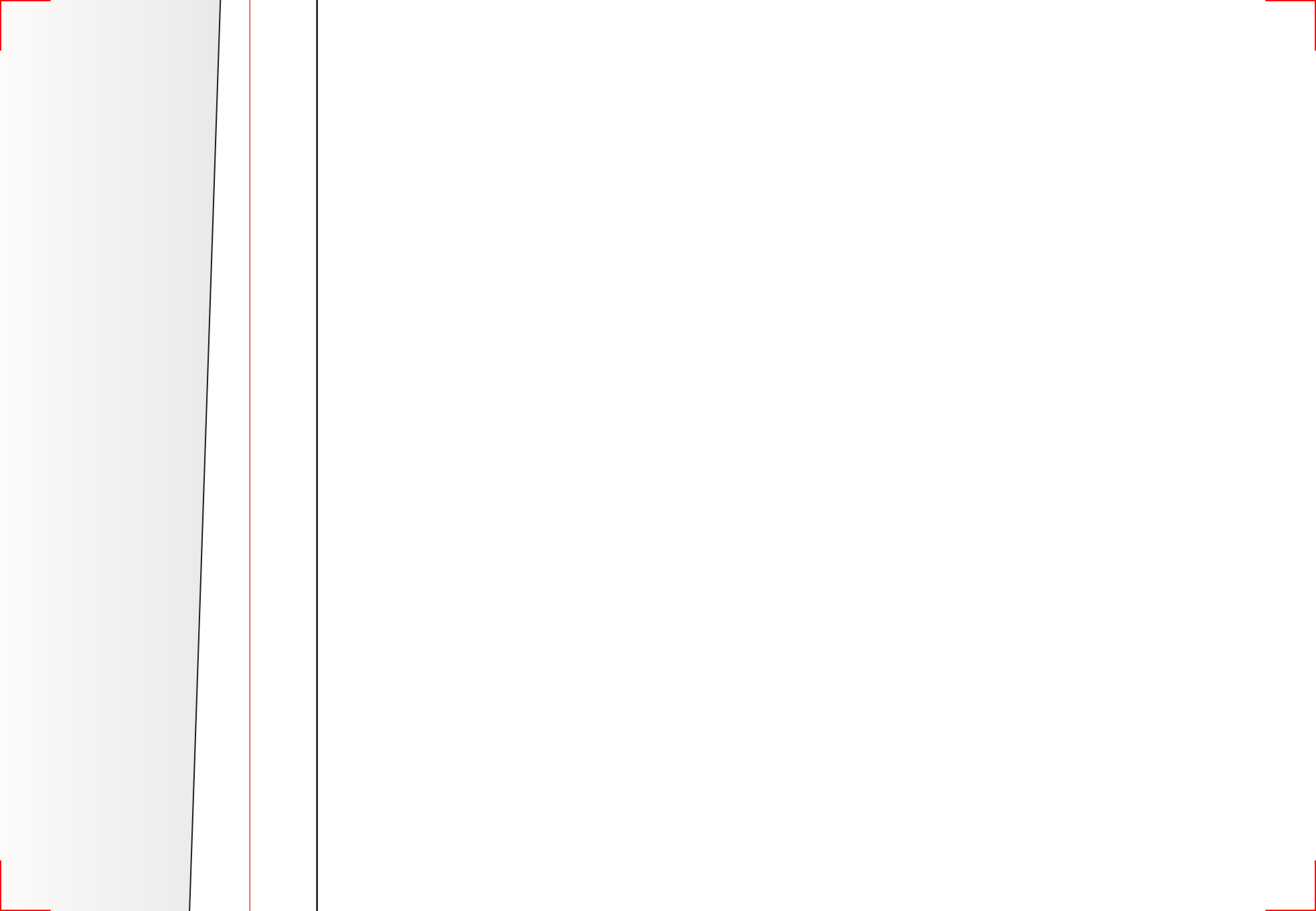




550 mm









5 mm